

Compatible with:

Handspring Treo 650
Palm Treo 600
Palm Treo 650
Sprint Treo 650



Warnings:

Carefully read all instructions and review the images before attaching.

Do not attach anything to the mount until after attaching the mount to the dashboard. Doing so makes it more difficult to attach the mount to the dash. **Please note:** If you screw into the mount it will be considered used and therefore non-refundable.

The ProClip mount and/or holder in the installation pictures may look slightly different from the one you have received. However, the same instructions apply. If you have questions call our customer service at **1-800-296-3212** or **+1-847-388-7171**.

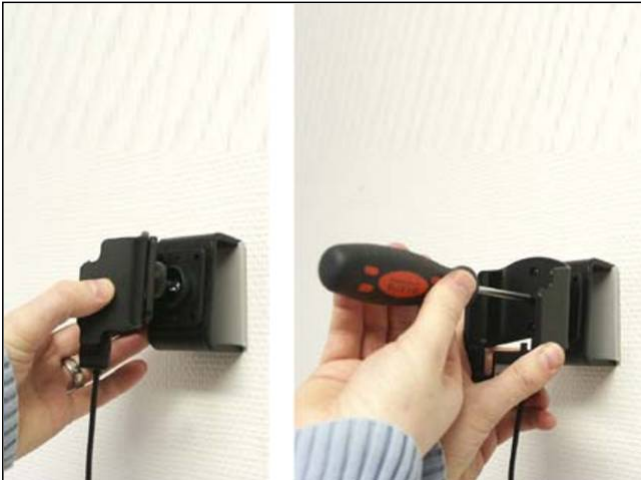
ProClip USA, Inc. may not be held liable for any personal injury or damage to a vehicle or device, resulting from accident or improper use or installation, before, during or after the installation or removal of this mount and/or holder.



1. 1. Loosen the screw in the center of the holder so you can remove the attaching part on the back. Place the attaching part on desired position. Screw the attaching part into place with the enclosed screws.



2. 2. Place the holder over the attaching part.



3. 3. Screw the holder onto the attaching part.



4. 4. The holder is in place.